



# SWE6420(6V42AH)C<sub>20</sub>



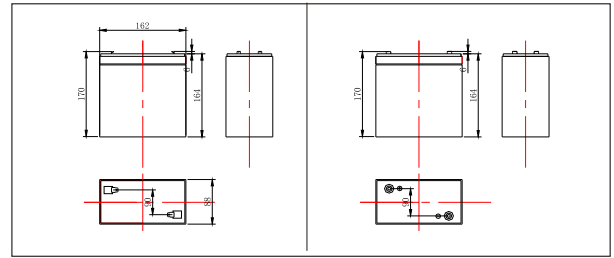
### Specifications

Nominal Voltage		6V
Rated capacity (20hour rate)		42 Ah
Dimensions	Total Height	170 mm (6.69 inches)
	Height	164 mm (6.46 inches)
	Length	162 mm (6.38 inches)
	Width	88mm (3.46inches)
Weight Approx		5.9Kg (13.00lbs)

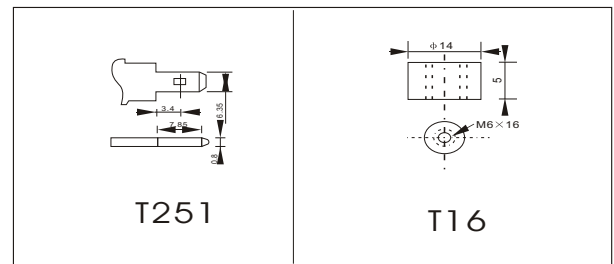
### Characteristics

Capacity 25°C(77°F)	20 hour rate(2.1 A) 5 hour rate(6.2 A) 1 hour rate(23.2 A)	42.0 AH 31.0 AH 23.2 AH
Internal Resistance	Full charged Battery at 25°C(77°F)	Approx 4.2 mΩ
Capacity affected by Temperature (10hour rate)	40°C(104°F) 25°C(77°F) 0°C(32°F) -15°C(5°F)	102% 100% 85% 65%
Self-Discharge at 25°C(77°F)	Capacity after 3 month storage Capacity after 6 month storage Capacity after 12 month storage	91% 82% 64%
Terminal	T251	
Charge (constant Voltage)	Cycle	Initial Charging Current less than 15.5 A Voltage 7.05-7.2V
	Float	Voltage 6.75-6.90V

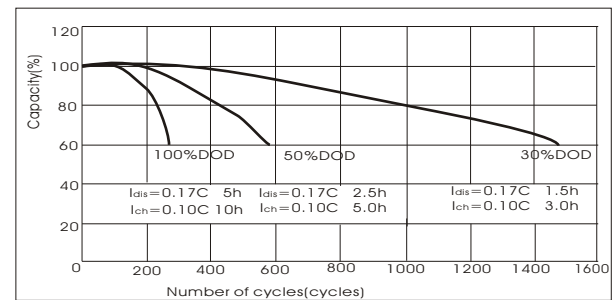
### Outer dimensions (mm)



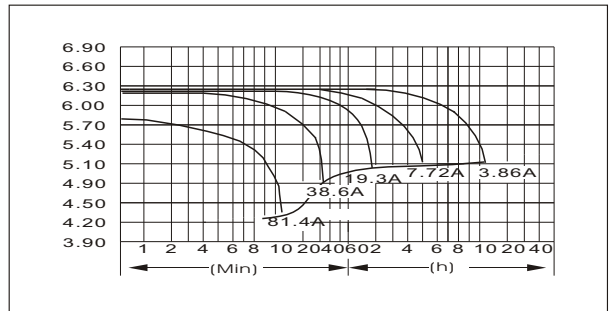
### Terminal Type (mm)



### Curves of cycle life(25°C)



### Discharge Curves 25°C(77°F)



### Constant Current(Amp) and Constant Power(Watt) Discharge Table at 25°C(77°F)

Time		5min	10min	15min	30min	1h	2h	3h	4h	5h	8h	10h	20h
4.80V	A	124	81	66	44	23.2	13.5	9.9	7.7	6.4	4.5	4.1	2.2
	W	638	435	352	237	125.1	74.2	55.2	43.4	36.2	25.9	23.4	12.7
5.10V	A	120	73	62	42	21.8	12.9	9.7	7.5	6.3	4.4	4.0	2.1
	W	639	410	346	236	123.1	74.3	55.9	43.8	36.4	25.7	23.4	12.5
5.25V	A	116	66	54	39	21.1	12.6	9.4	7.4	6.2	4.4	3.9	2.1
	W	632	374	309	227	122.0	73.0	54.9	43.4	36.2	25.6	23.1	12.5
5.40V	A	112	62	50	36	20.4	12.3	9.2	7.3	6.0	4.2	3.9	2.1
	W	626	357	289	210	118.6	71.9	54.2	43.1	35.6	25.2	22.9	12.4
5.55V	A	108	58	46	32	19.7	12.0	8.9	7.1	5.9	4.1	3.7	2.0
	W	612	336	270	190	115.8	70.7	52.7	42.3	35.0	24.7	22.1	11.9