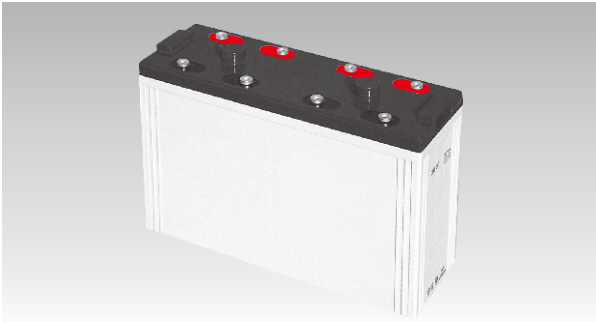
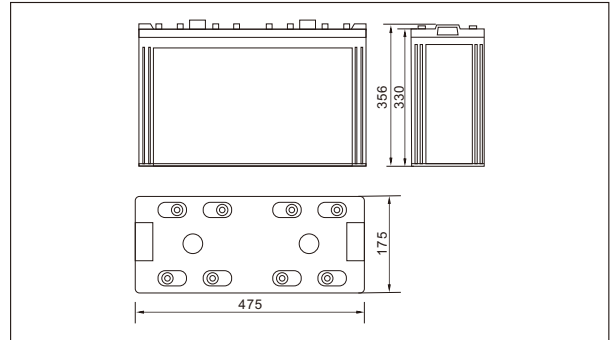




SW210000(2V1000AH)



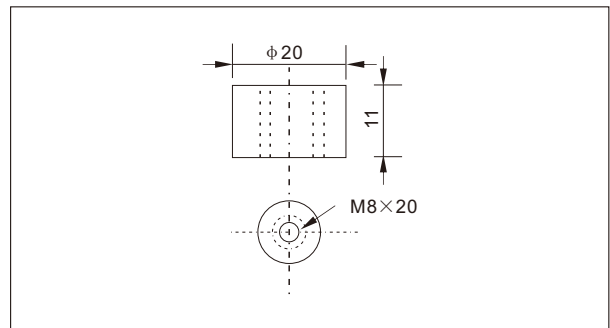
Outer dimensions (mm)



Specifications

Nominal Voltage		2 V
Rated capacity (10 hour rate)		1000 Ah
Dimensions	Total Height	356 mm (14.02 inches)
	Height	330 mm (12.99 inches)
	Length	475 mm (18.7 inches)
	Width	175 mm (6.89 inches)
Weight Approx		61.5 Kg (135.6 lbs)

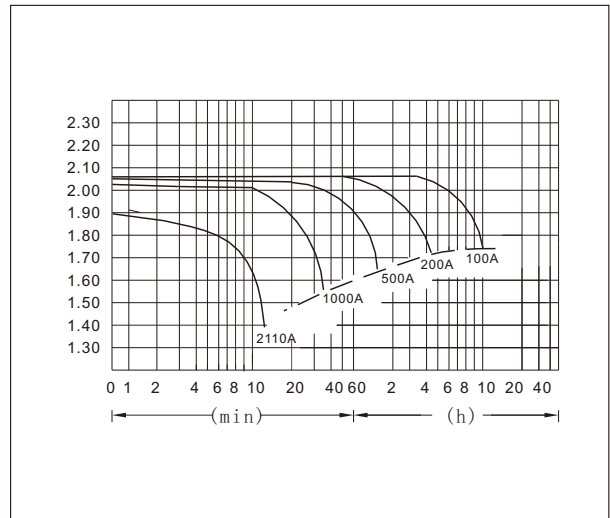
Terminal Type (mm)



Characteristics

Capacity 25°C(77°F)	10 hour rate(100 A)	1000 AH
	5 hour rate(160A)	800 AH
	1 hour rate(600 A)	600 AH
	1.5 hour discharge to 1.75 V	400 A
Internal Resistance	Full charged Battery at 25°C(77°F)	0.2 mΩ
Capacity affected by Temperature (10hour rate)	40°C(104°F)	102%
	25°C(77°F)	100%
	0°C(32°F)	85%
	-15°C(5°F)	65%
Self-Discharge at 25°C(77°F)	Capacity after 3 month storage	91%
	Capacity after 6 month storage	82%
	Capacity after 12 month storage	64%
Terminal	T20	
Charge (constant Voltage)	Cycle	Initial Charging Current less than 400 A Voltage 2.35-2.40V
	Float	Voltage 2.25-2.30V

Discharge Curves 25°C(77°F)



Constant Current(Amp) and Constant Power(Watt) Discharge Table at 25°C(77°F)

Time		10min	30min	1h	2h	3h	4h	5h	8h	10h	20h
		1.60V	A	1990.0	1140.0	600.0	350.0	258.0	200.0	168.42	115.8
	W	3910	2040	1160	680	500	390.0	320.0	220.0	205.0	108.9
1.70V	A	1890.0	1110.0	564.0	334.0	250.0	195.0	165.1	113.8	103.5	56.0
	W	3760	2020	1090	640	480	380.0	310.0	220.0	195.0	107.0
1.75V	A	1790.0	1020.0	550.0	326.0	244.0	192.0	163.6	112.5	102.0	55.3
	W	3640	1900	1050	630	470	370.0	306.0	217.0	193.0	105.0
1.80V	A	1690.0	940.0	530.0	318.0	238.0	189.0	154.0	109.6	100.0	54.6
	W	3500	1830	1010	620	460	362.0	300.0	210.0	192.0	104.0
1.85V	A	1590.0	840.0	500.0	310.0	230.0	183.3	151.0	106.7	97.5	54.0
	W	3300	1680	980	610	460	355.0	298.0	201.0	190.0	102.5