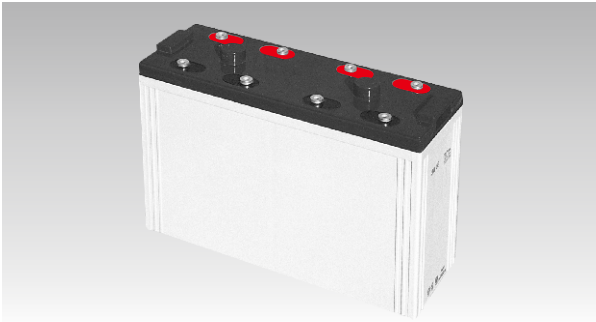
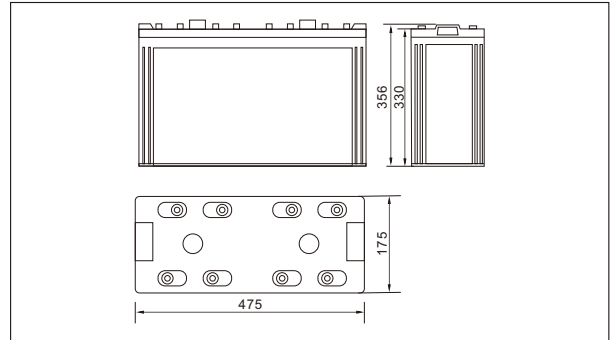




SW210000(2V1000AH)



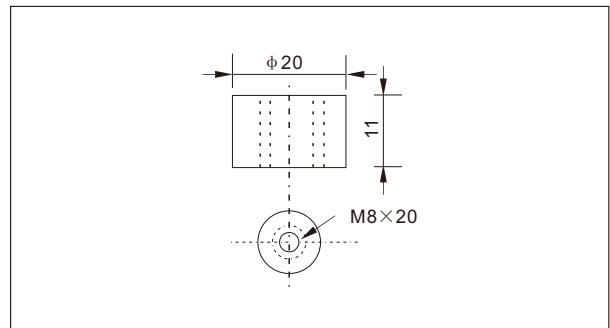
Outer dimensions (mm)



Specifications

Nominal Voltage	2 V	
Rated capacity (10 hour rate)	1000 Ah	
Dimensions	Total Height	356 mm (14.02 inches)
	Height	330 mm (12.99 inches)
	Length	475 mm (18.7 inches)
	Width	175 mm (6.89 inches)
Weight Approx	64 Kg (141.1 lbs)	

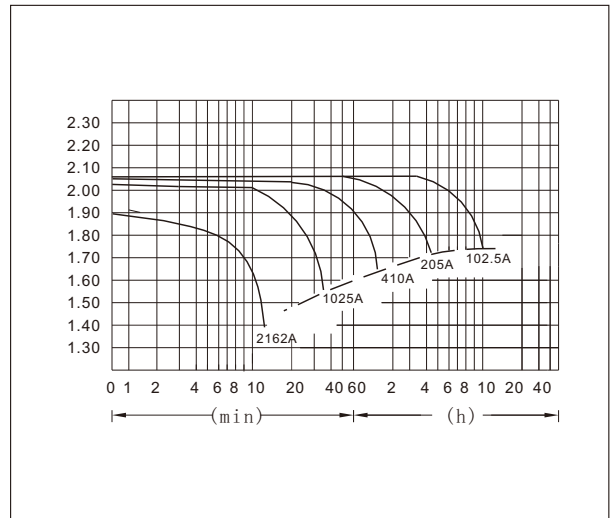
Terminal Type (mm)



Characteristics

Capacity 25°C(77°F)	10 hour rate(100 A)	1000 AH
	5 hour rate(160A)	820 AH
	1 hour rate(600 A)	615 AH
	1.5 hour discharge to 1.75 V	410 A
Internal Resistance	Full charged Battery at 25°C(77°F)	0.5 mΩ
Capacity affected by Temperature (10hour rate)	40°C(104°F)	102%
	25°C(77°F)	100%
	0°C(32°F)	85%
	-15°C(5°F)	65%
Self-Discharge at 25°C(77°F)	Capacity after 3 month storage	91%
	Capacity after 6 month storage	82%
	Capacity after 12 month storage	64%
Terminal	T20	
Charge (constant Voltage)	Cycle	Initial Charging Current less than 250 A Voltage 2.35-2.40V
	Float	Voltage 2.25-2.30V

Discharge Curves 25°C(77°F)



Constant Current(Amp) and Constant Power(Watt) Discharge Table at 25°C(77°F)

Time		10min	30min	1h	2h	3h	4h	5h	8h	10h	20h
1.60V	A	2039.8	1168.5	615.0	358.8	264.5	205.0	169.6	118.7	112.8	58.4
	W	4008	2091	1189	697	513	399.8	328.0	225.5	210.1	111.6
1.70V	A	1937.3	1137.8	578.1	342.4	256.3	199.9	166.1	116.6	106.1	57.4
	W	3854	2071	1117	656	492	389.5	317.8	225.5	199.9	109.7
1.75V	A	1834.8	1045.5	563.8	334.2	250.1	196.8	164.0	115.3	104.6	56.7
	W	3731	1948	1076	646	482	379.3	313.7	222.4	197.8	107.6
1.80V	A	1732.3	963.5	543.3	326.0	244.0	193.7	159.9	112.3	102.5	56.0
	W	3588	1876	1035	636	472	371.1	307.5	215.3	196.8	106.6
1.85V	A	1629.8	861.0	512.5	317.8	235.8	187.9	155.8	109.3	99.9	55.4
	W	3383	1722	1005	625	472	363.9	305.5	206.0	194.8	105.1